

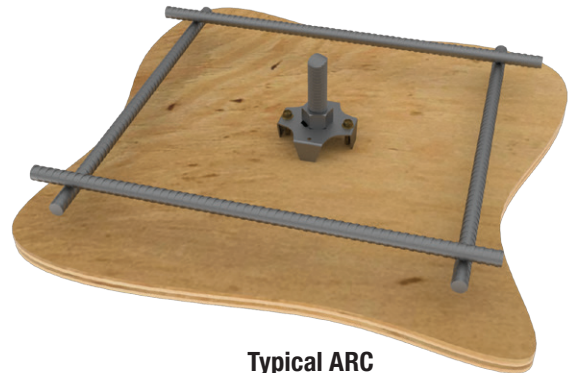
Anchor Rod Chairs

ARC series

When attached to the forms, the ARC allows for easy and precise placement of anchor rods prior to pouring concrete. The “chair” and nut are pre-assembled for quick installation.

Features:

- Positive stop for threaded rod at the bottom of the nut
- Easy flow of concrete
- Nibbled out corners allows for potentially tighter positioning on inside corner of form
- ARC’s steel construction will not deform in the hot sun
- 1-inch stand-off base to meet code requirement for concrete cover



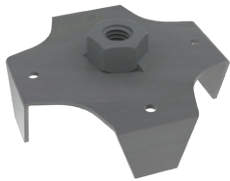
Typical ARC installation

Materials: Nut: Heavy hex; Chair: 16 gauge

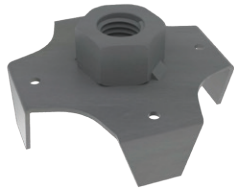
Finish: Nut: None; Chair: Rolled Steel

Installation:

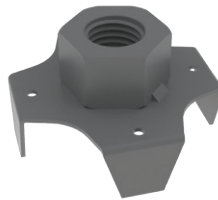
- Installs with nails or screws. Threaded rod can then be screwed in to desired depth.



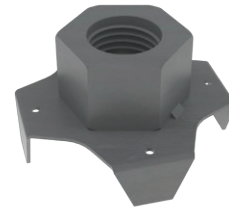
ARC4



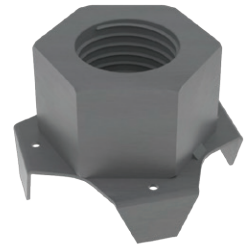
ARC6



ARC8



ARC12



ARC16

USP Stock No.	Ref. No.	Anchor Bolt Dia. (in)	Ctn Qty
ARC4	ABL4-1	1/2	25
ARC5	ABL5-1	5/8	
ARC6	ABL6-1	3/4	
ARC7	ABL7-1	7/8	
ARC8	ABL8-1	1	
ARC9	ABL9-1	1-1/8	
ARC10	ABL10-1	1-1/4	
ARC11	--	1-3/8	
ARC12	--	1-1/2	
ARC14	--	1-3/4	
ARC16	--	2	